



D3.2 – Production and delivery of polyols



Funded by
the European Union

Views and opinions expressed are however those of the author(s) only and do not necessarily reflect those of the European Union or HADEA. Neither the European Union nor the granting authority can be held responsible for them

Document control sheet

Project	New Wave – Building a sustainable & circular economy through innovative, biobased manufacturing lines
Call identifier	Horizon-CL4-2021-TWINTRANSITION-01-05: Manufacturing technologies for bio-based materials
Grant Agreement N°	101058369
Coordinator	BTG Biomass Technology Group BV
Work package N°	3
Work package title	ML1 Manufacturing line for polyols and polyurethanes
Work package leader	AEP Polymers
Document title	D3.2 Production and delivery of polyols
Lead Beneficiary	BTG Biomass Technology Group BV
Dissemination level	PU
Authors	BTG Biomass Technology Group BV
Contributors	BTG Biomass Technology Group BV
Reviewer(s)	BTG Biomass Technology Group BV
Issue date	26/03/2024

Index

Executive Summary.....	4
Introduction	5
Introduction and Objectives of NewWave.....	5
Thermo-Chemical Fractionation & sugar hydrogenation	6
Production of polyol samples	7
Results.....	7
Polyol samples prepared and shipped to AEP	7
Analysis of polyols samples.....	9
Conclusions	11

List of figures

Figure 1: Schematic overview of the NewWave ML's.....	5
Figure 2: On left TCF pilot plant, on the right HDO pilot plant	6
Figure 3: Examples of polyol samples	9
Figure 4: HPLC chromatogram & photo of light polyols	9

List of tables

Table 1: Polyol samples prepared and shipped to AEP	8
Table 2. Analysis of samples prepared.....	10

Executive Summary

D3.2 is the follow-up/update of D3.1 describing the production and delivery of polyol samples. The deliverables are part of sub-task 3.1: Production of polyols (M1-M36). In D3.1, the polyol samples produced and delivered in M1-12 were described, in D3.2 the polyol samples produced and delivered in the period M12-M24 are added to this. The polyols were produced at BTG, by the hydrogenation of pyrolysis oil or pyrolytic sugars. The hydrogenation was executed in bench-scale or pilot-scale hydrotreaters applying the patented Ni-based PICULA™ catalyst. After hydrogenation of the feed, different post-treatments/purification steps were applied to remove impurities. The 13 polyol samples produced were sent to partner AEP to be tested in different polyurethane applications.

Introduction

Introduction and Objectives of NewWave

NewWave will contribute to building a circular economy by introducing sustainable raw materials in different manufacturing lines (ML's), replacing toxic chemicals, and lowering the environmental footprint of the products. The four manufacturing lines (see Figure 1) will produce engineered wood panels, furan base-chemicals, polyols and polyurethanes, and modified/engineered wood. These lines are not chosen 'at random', rather they evolved from previous research and technology development work and will reach TRL-6 by the end of the project. The products produced in the manufacturing lines will be used to enhance the sustainability of building materials in the construction industry. NewWave aims at wood-based materials including Cross Laminated Timber (CLT) to replace steel and concrete as structural components, modified/engineered wood to replace tropical hardwood or chemically treated wood for outdoor use, and Medium Density Fibreboard (MDF) and plywood for interior usage. Toxic chemicals like formaldehyde and creosote will be replaced by non-toxic, bio-based alternatives. Within the project, a small demonstration project will be built with these materials to show the products and test their durability.

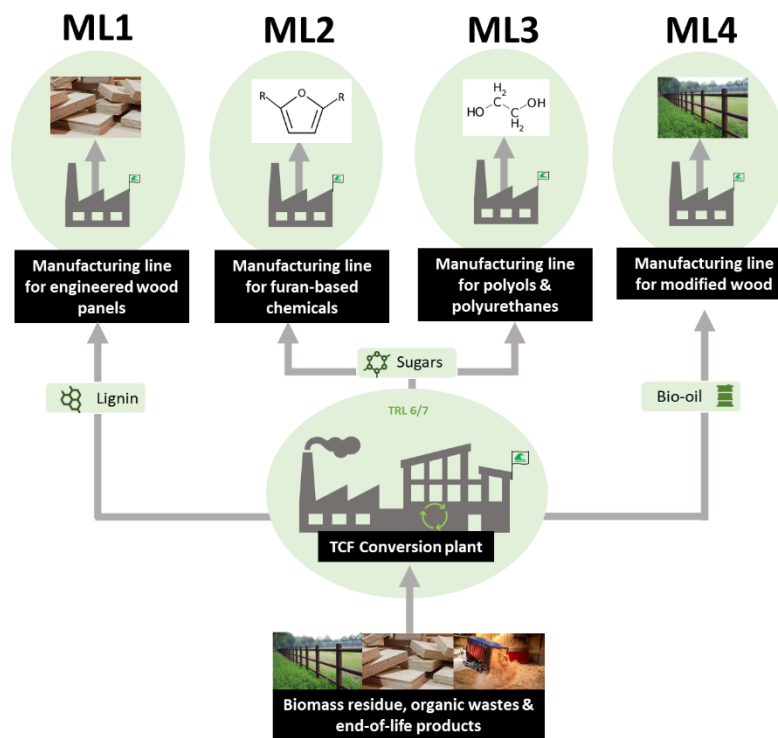


Figure 1: Schematic overview of the NewWave ML's

Thermo-Chemical Fractionation & sugar hydrogenation

The sustainable raw materials used in the manufacturing lines are obtained by Thermo-Chemical Fractionation (TCF) of biomass residues and end-of-life products. TCF is an innovative, two-step conversion process to transform different bio-resources into sustainable raw materials and is currently at a TRL-6/7. In the TCF process biomass is first converted by fast pyrolysis into Fast Pyrolysis Bio-Oil (FPBO). Subsequently, the FPBO is fractionated -based on chemical functionality- yielding a reactive lignin fraction and a sugar-rich fraction, both being excellent starting materials to produce sustainable, bio-based chemicals & materials. The selected product lines fully exploit the unique chemical functionalities already present in the biomass feeds. Moreover, the lines are interlinked, and output from one line will further improve the sustainability of the other. Wastewater treatment and water re-use is integral part of the NewWave concept. Combined with end-of-life recycling options and efficient use of byproducts this results in essentially waste-free manufacturing processes.



Figure 2: On the left TCF pilot plant, on the right HDO pilot plant

FPBO, and the pyrolytic sugar can be used as a raw material for the production of green polyols. In TCF, the pyrolytic sugars (PS) are obtained as a watery solution that can directly be processed in hydrogenation. Furthermore, the pyrolytic lignin can be used in other added value applications such as various resin systems, minimalizing the production of waste residues. At BTG, the TCF process is performed on pilot-scale (see Figure 2). The pyrolytic sugar consists of

small sugar derived molecules such as glycoaldehyde, levoglucosan, cellobiosan, large polymer fractions of cellulose but also other organic components such as carboxylic acids and lignin derived phenolics etc.

Production of polyol samples

The polyols are produced by the hydrogenation of fast pyrolysis bio-oil (FPBO) or the pyrolytic sugars (PS). The hydrogenation is executed in bench-scale or pilot-scale hydrotreaters applying the patented Ni-based PICULA™ catalyst. In addition, alternative inhouse prepared catalysts are tested at various process conditions in an endeavor to increase the yield of small polyols. After hydrogenation of the feed, post-treated and/or further purification will be applied to make the polyols suitable to be used as a green additive or as raw materials for the production of polyurethanes. The mixed polyols, the MEG (mono ethylene glycol) and MPG (mono propylene glycol) will be used by AEP as the starting polyols or as chain extenders in polyurethane production and as an additive in formulations to modify wood.

Results

Polyol samples prepared and shipped to AEP

A large amount of SPO (stabilized pyrolysis oil) was produced by the hydrogenation of FPBO applying the PICULA™ catalyst under elevated but standard T and PH₂. A smaller amount of SPS (stabilized pyrolytic sugars) was produced by the hydrogenation of PS under similar conditions in a bench-scale hydrotreater. Both The SPO and SPS contain a large fraction of polyols and were subsequently post-treated to remove impurities such as residual lignin. An overview of the samples produced and sent to AEP for testing in PUR-systems is given in Table 1. Figure 3, shows a photo of some of the samples produced. The samples produced contain both the large/heavy and small/light polyols (mixed), only the small/light polyols (MEG + MPG), or only the large/heavy (oligomeric & polymeric) polyols. Figure 4 shows an HPLC chromatogram and photo of the best produced light polyol sample.

Table 1: Polyol samples prepared and shipped to AEP

Sample no.	Sample name	Sample description ¹	Shipment code	Amount (g)	Shipment date
1	BTG_NW_SPOF	Mixed polyols derived from SPO	2022-2567	300 g	24/05/22
2	BTG_NW_SPOL	Light polyols derived from SPO	2022-2566	300 g	24/05/22
3	BTG_NW_SPOH	Heavy polyols derived from SPO	2022-2565	800 g	24/05/22
4	BTG_NW_SPSL	Light polyols derived from SPS	2022-2619	90 ml	16/11/22
5	BTG_NW_SPSH	Heavy polyols derived from SPS	2022-2621	350 ml	16/11/22
6	BTG_NW_SPSL	Light polyols derived from SPS	2022-2618	50 ml	16/11/22
7	BTG_NW_SPOFE	Extracted mixed polyols derived from SPO	2022-2620	175 ml	16/11/22
8	BTG_NW_SPOLE	Extracted light polyols derived from SPO	2022-2622	50 ml	16/11/22
9	BTG_NW_SPSL	Light polyols derived from SPS	2023-2697	100 ml	11/05/23
10	BTG_NW_SPOFE	Extracted mixed polyols derived from SPO	2023-2698	250 ml	11/05/23
11	BTG_NW_SPOLE	Extracted light polyols derived from SPO	2023-2707	200 ml	13/06/23
12	BTG_NW_SPOLE	Extracted light polyols derived from SPO	2023-2770	150 ml	16/11/23
13	BTG_NW_SPSL	Light polyols derived from SPS	2023-2771	150 ml	16/11/23

¹: SPO: Stabilized pyrolysis oil, ²: Stabilized pyrolytic sugars



Figure 3: Examples of polyol samples

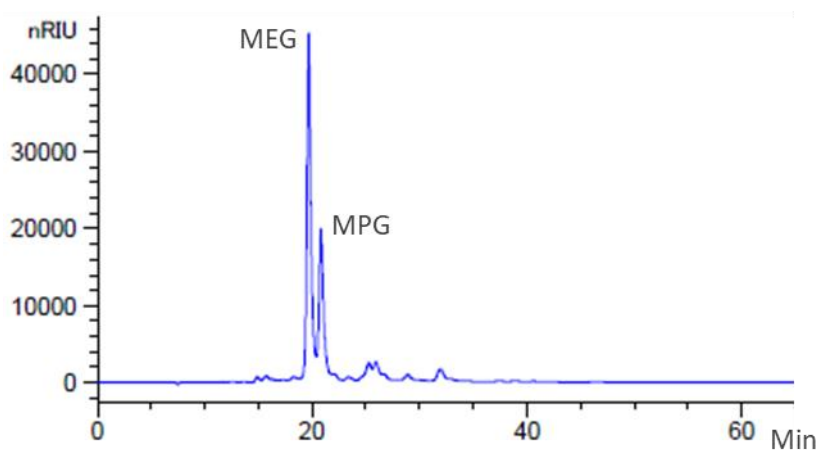


Figure 4: HPLC chromatogram & photo of light polyols

Analysis of polyols samples

For all samples, standard analysis was performed including HPLC-analysis (if possible) to determine the light/small polyol content. Results of these analysis are given in Table 2.

Table 2. Analysis of samples prepared.

	2022-2565	2022-2566	2022-2567	2022-2618	2022-2619	2022-2620	2022-2621	2022-2622	2023-2697	2032-2698	2023-2707	2023-2770	2023-2771
HPLC¹													
MEG (wt%)	- ²	35,6	21,9	26,90	35,2	28,8	- ²	35,0	27,9	28,2	55,3	54,0	31,8
MPG (wt%)	- ²	15,9	11,3	10,3	14,7	12,5	- ²	14,2	11,7	12,8	23,3	22,7	11,3
Standard analysis													
C/H/N (wt%)	63,1/7,8/0,0	49,0/9,6/0,0	49,0/9,3/0,0	51,5/9,4/0,2	50,0/9,1/0,1	46,2/8,7/0,0	58,4/6,8/0,5	48,3/9,8/0,0	52,1/8,9/0,2	46,2/8,9/0,3	44,8/10,0/0,1	43,9/9,7/0,1	51,0/8,3/0,2
Karl Fischer H ₂ O (wt%)	0,6	1,0	2,1	1,7	1,9	2,5	0,5	1,1	0,9	1,1	1,2	0,5	0,8
TAN (mg KOH/g) ³	11,6	40,7	37,1	61,4	64,6	15,2	11,5	12,6	61,2	19,5	11,9	7,2	50,6
CAN (mmol/g) ⁴	1,9	0,2	2,6	1,7	1,9	0,5	2,4	0,0	1,4	1,6	0,6	0,0	1,6
pH	4,5	4,4	4,0	4,2	4,3	3,8	4,6	4,4	4,8	4,1	4,4	4,1	4,2
CR (wt%) ⁵	15,6	0,0	3,9	1,1	0,6	3,2	25,4	0,0	0,3	3,8	0,0	0,2	0,5

	Heavy polyols; oligomers & polymers
	Light polyols; a.o. MEG & MPG
	Mixed polyols; Heavy + light polyols

¹: HPLC analysis: MEG = Mono ethylene glycol, MPG = Mono propylene glycol. ²: could not be determined by HPLC. ³: Total acid number. ⁴: Carbonyl number. ⁵: Carbon residue.

Conclusions

D3.2 is a follow-up/update of D3.1 and is the second of three deliverables on the production and delivery of polyol samples to partner AEP. The polyols were produced at BTG, by the hydrogenation of pyrolysis oil or the pyrolytic sugars. The hydrogenation was executed in bench-scale or pilot-scale hydrotreaters applying the patented Ni-based PICULA™ catalyst. After hydrogenation of the feed, different post-treatments/purification steps were applied to remove impurities. The 13 polyol samples produced were analyzed and sent to partner AEP to be tested in different polyurethane applications.

The logo consists of two stylized, overlapping wave shapes in a golden-brown color, positioned to the left of the text.

NewWave



Funded by
the European Union

This project has received funding from the European Union's Horizon Europe Research and Innovation Programme under Grant Agreement No. 101058369